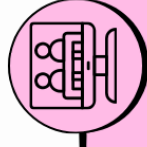


CRITICAL DATES - LICENSED AND ESP EVALUATIONS 2024-2025



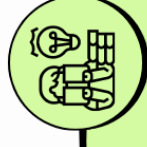
AUGUST

- **August 12-30** Notify educators of evaluation
- **August 30** Delegation list due to Rebecca Lee



OCTOBER

- **October 31** Beginning of the year interims due



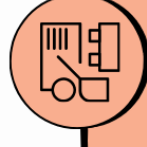
DECEMBER

- **December 20** Provisional and probationary first evaluation cycle due



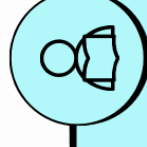
MARCH

- **March 31** All full JPAS evaluations due



APRIL

- **April 30** Last day full JPAS evaluations may be completed for late hires



MAY

- **May 31** All end of the year interims with uploaded evidence due
- **May 31** All contracted ESP evaluations due

Updated 5/28/24

MONTHLY LISTS WILL BE SHARED ON GOOGLE-DRIVE & UPDATED AT LEAST MONTHLY